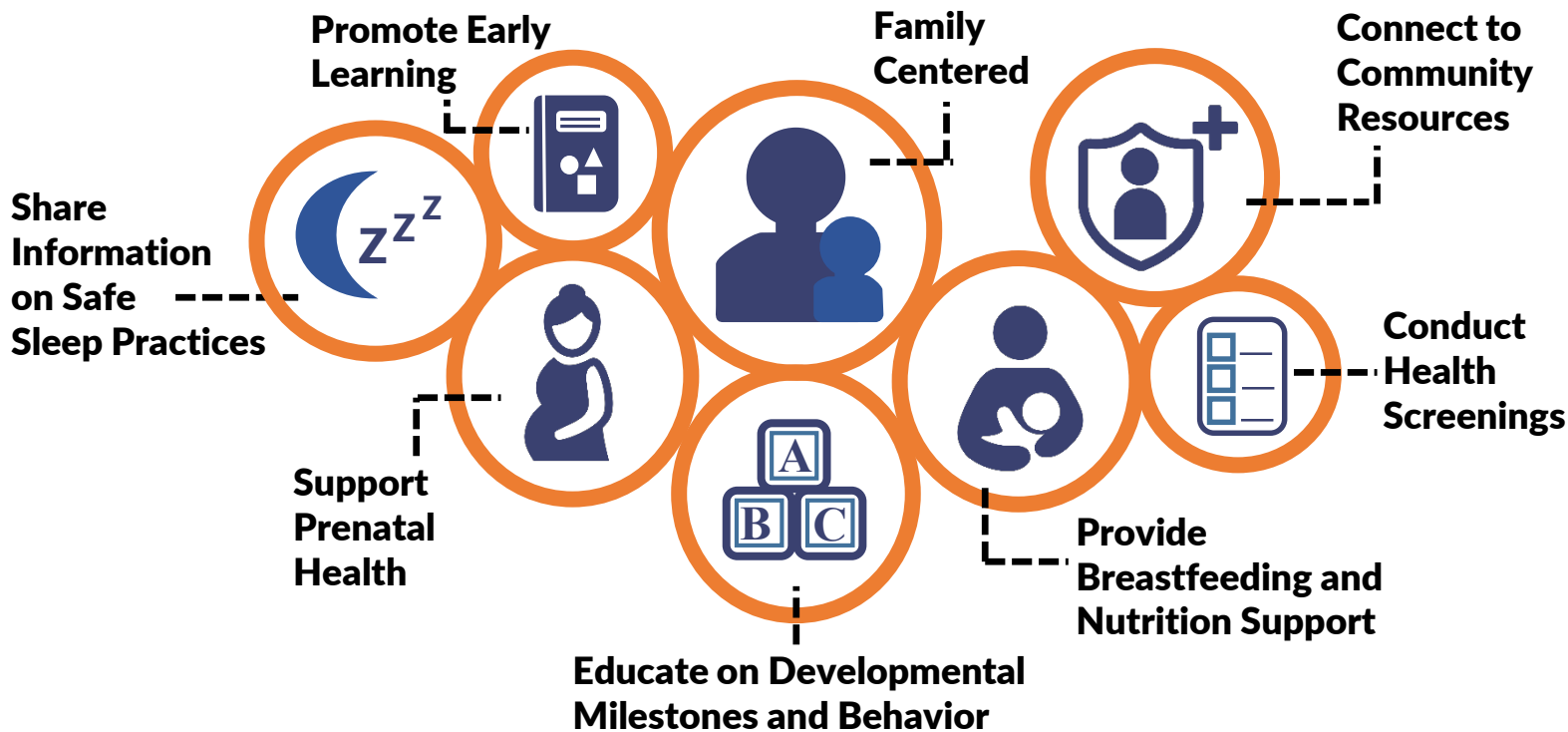


Home Visiting in ND

There are many different home visiting models, all with varying requirements for staff qualifications, visit frequency, and parenting curriculum, but all programs share some common characteristics:



Evidence-Based Models in North Dakota*

- ★ Early Head Start**
- ★ Parents as Teachers
- ★ Nurse-Family Partnership
- ★ Healthy Families America
- ★ Family Spirit



The Impact of Home Visiting



Families are more self-sufficient



Children are better prepared for school



Children are safer (abuse and neglect decrease)



Moms and babies have improved health

*Most of the programs listed above serve multiple cities or counties in a regional area. The stars below represent either a center point of their service region or the city in which that program's offices are located.
 **There are other Head Start/Early Head Start locations in ND; however, not all provide regular, ongoing home visiting services.

Support for Home Visiting

Federal, local, state, and private funds support home visiting programs in North Dakota. Programs are hosted by a variety of organizations, from tribal entities to local public health units.



Maternal, Infant, and Early Childhood Home Visiting

Prevent Child Abuse North Dakota (PCAND) administers the federal Maternal, Infant, and Early Childhood Home Visiting (MIECHV) grant in North Dakota. MIECHV enjoys bipartisan support in Washington, D.C., and ensures high quality services by requiring the following:

- Implementation of an evidence-based home visiting model
- Extensive monitoring of programmatic and fiscal activities
- Demonstrated progress in the following key areas:
 - Improving maternal and infant health
 - Reducing child injuries, abuse, and neglect
 - Improving school readiness and achievement
 - Reducing crime or domestic violence
 - Improving family economic self-sufficiency
 - Coordinating with, and referring to, community resources and supports

For more information on MIECHV or home visiting in North Dakota, contact Elizabeth at epihlaja@pcand.org

North Dakota

By the Numbers*



49,000 pregnant individuals + families with children not yet in kindergarten

47% meet one or more target population criteria

18% meet two or more target population criteria

1.1% (550) families received home visits in 2018

Factors that might influence family risk of poor outcomes, including:

- Low income (less than federal poverty level – FPL)
- Parent with no high school diploma
- Pregnant individual or mother younger than 21 years of age
- Single parent



What are the target population criteria?

Since 2018, ND MIECHV sites have increased rates of:

- Guardian depression screenings
- Intimate partner violence screenings
- Developmental screenings
- Parent-child interaction assessments

Families served by ND MIECHV have:

- Increased rates of timely postpartum checkups
- Increased rates of well-child visits

97.8% of ND MIECHV families read, sing, or tell stories to their children every day

*2019 ND Profile, National Home Visiting Yearbook